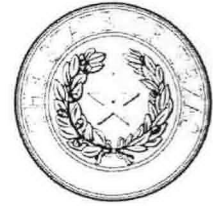




Brown County Sheriff's Office

Sheriff Bobby R. Grubbs
Chief Deputy Bobby Duvall
Captain Tony Aaron



1050 W. Commerce ~ Brownwood ~ TX ~ 76801 325-646-5510 ~ 325-643-3238/Fax

DATE: December 18, 2014
TO: Bobby R. Grubbs, Sheriff ; Bobby Duvall, Chief Deputy
FROM: Les Rush, Sgt Operations
RE: Fence Project update

As per instructions from Nina Cox, a notification for bid request was posted in the Brownwood Bulletin for 2 consecutive weeks, Tuesday Dec 9th and Tues Dec 16th.

Bid packs were available to each bidder, with bidding instructions included. Each bidder was instructed to submit a sealed bid no later than Dec 17th at 3:00p.m. Four (4) sealed bids were received within the specified time frame. All were sealed and addressed properly.

Bidders were The Fence Guys, Brownwood, Texas; Heart of Texas Fence Co., Brownwood, Texas; Texas Fence and Welding, Brownwood, Texas; United Building Co, El Paso, Texas.

Bids will remain in the safe in Patti Mauldin's office until ready to open in the presents of proper authorities.

We have requested to present this project to Commissioners Court. At this time we have not received a date to be on the agenda.

It is my understanding that this process was also required by the City of Brownwood.

As of my last conversation with City Engineer, Don Hatcher, the City is still on board with this project and has pledge a substantial amount toward the total amount approved. Mr. Hatcher has also looked over the specifications presented and would authorize an Engineer's stamp if needed.

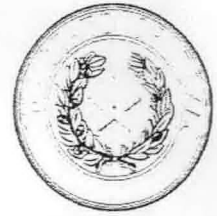
Les Rush

December 22, 2014
(Exhibit # 2)



Brown County Sheriff's Office

Sheriff Bobby R. Grubbs
Chief Deputy Bobby Duvall
Captain Tony Aaron



1050 W. Commerce ~ Brownwood ~ TX ~ 76801 325-646-5510 ~ 325-643-3238/Fax

Date: November 3, 2014
TO: Bidders
FROM: Les Rush, Sgt
RE: Invitation for Bid
Location: Law Enforcement Center, 1050 W Commerce, Brownwood, Texas 76801

Scope of work: Security Fencing

Item #1 – Furnish material, labor and equipment to install approximately 1,655 foot, new construct and approximately 335 foot of razor wire only, on existing fence

- a. Razor wire will be of 18" diameter reinforce stainless steel type
- b. Chain link fence will be of 9 gauge wire, six (6) foot high with barb 3 strand arms for wire attachment
- c. Line post will be 2 3/8" diameter schedule 40 galvanized pipe with 1-5/8 inch top rail of schedule 40 galvanized. Post space 10 foot 5 inch maximum.
- d. Gate post will be 3" diameter schedule 40 galvanized.
- e. Gate post for slide gates will be 4" schedule 40 galvanized.
- f. Line post shall be set in 4,000 psi concrete, each post shall be a minimum of 24" deep with a minimum of 8" diameter hole.
- g. Gate post shall be set in 4,000 psi concrete. Each gate post shall be a minimum of 36" to 48" deep with a minimum of 12" diameter hole.
- h. Holes in existing concrete sidewalks shall be core sawed. Post may be driven to a minimum of 12" deep and grouted for firm fit.

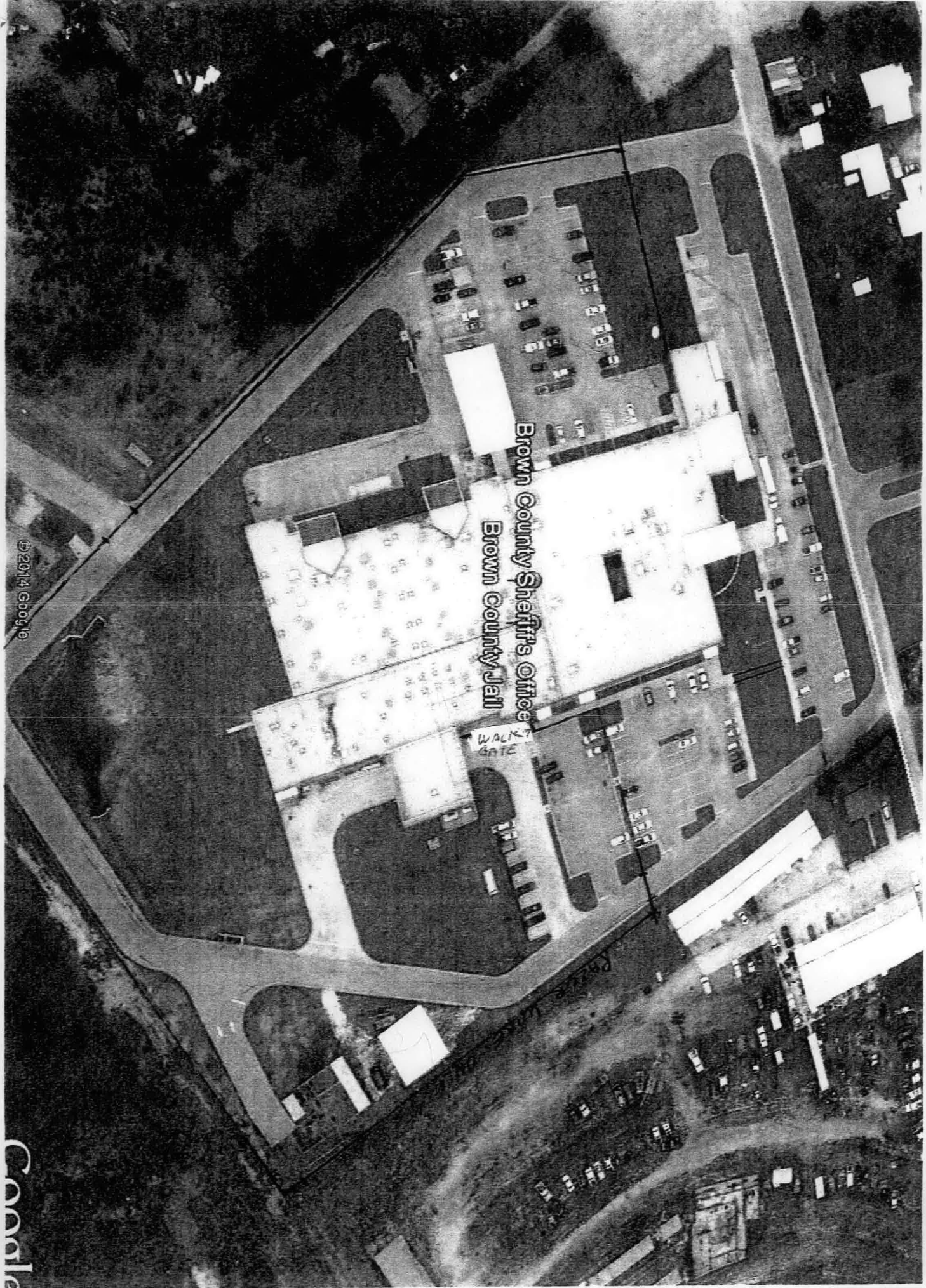
Item #2 – Furnish and install 3 (three) 25 (twenty-five) foot center lever slider gates with solar self contained operator.

- a. Operator shall be hysecurity slide smart model DCS-15 or equal. Operator shall be capable of operating up to a 1500 lb gate at a rate of 0.75 to 1.25 feet per second. Operator shall be solar powered and adequate battery storage to supply power to each operator up to 25,000 feet of operation on a single battery charge. Each slider gate shall have the capability of opening with a touch key pad or remotes, accessible from vehicle.
- b. Each exit will be controlled by a sensor located in such a way that egress can be accomplished by activating or tripping a devise that will open the gate without entering code or the use of a remote, free exit.

- c. The operator shall be covered under a 5 year mfg. warranty.
- d. Walk gate at building shall be operated by jail control room. Latch, wiring and intercom will be by others.
- e. Each bidder shall include scheduling for starting and completion of the project. This time should include ordering and delivery of material and supplies needed for project.
- f. Any permits (if needed) will be the responsibility of the contractor.
- g. Utility lines (underground) shall be located and flagged prior to any excavation.
- h. All work and material shall be warranted for one (1) full year. A payment bond shall be executed in the amount of the contract. A performance bond shall be executed in the amount of the project.
- i. Contractor may submit for partial payment upon approval of a representative from the Brown County Sheriff's Office. Each submittal shall indicate what percentage of the project is complete.
- j. A certificate of liability insurance shall be required prior to beginning of project. The successful bidder shall furnish the County a copy of Comprehensive General Liability Insurance in the amount of \$300,000 per occurrence bodily injury and \$100,000 for aggregate property damage and proof of Workers Compensation coverage prior to issuance of notice to proceed.
- k. All workers shall be subject to background checks.
- l. NOTE: All measurements indicated in item #1 are approximate, all measurements are to be verified by each bidder. Aerial photo is not to scale.

Item #3: Bidding Instructions

Submit seal bids to the Brown County Sheriff's Office, Attn: Les Rush, Sgt of Operations or Chief Deputy, Bobby Duvall at 1050 W Commerce, Brownwood, Texas 76801, no later than Wednesday, December 17th, 2014 by 3:00 p.m.



Brown County Sheriff's Office
Brown County Jail

WALK
GATE

Parking

©2014 Google

Coole

COMMERCIAL SlideSmart DC™



Slide Gate Operator

Ultra Reliable/Low maintenance • Variable speed • Easy, inexpensive installation • Solar

Is your slide gate operator this Smart?

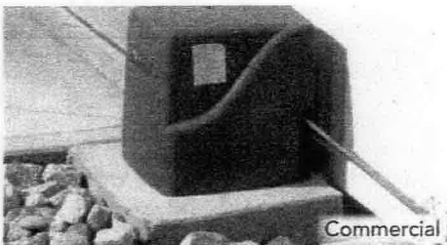
Unmatched 4,000 ft (1,219 m) gate travel after AC power loss on standard batteries. Exceptional 25,000 ft (7,620 m) gate travel after AC power loss on extended batteries

Moves 40 ft/1,500 lb (12 m/680 kg) gates with ease

Independent, field-adjustable open and close speeds. 1 ft/s (30 cm) and 2 ft/s (61 cm)

Intelligent charging system, monitors battery condition to maximize battery life

Fast and easy installation reduces costs



CHASSIS: Heavy duty, low flex and corrosion resistant.

SMART DC CONTROLLER: ultimate in reliability, configurability, system troubleshooting. Configure gate to exact user needs with 70+ field adjustable settings. Powerful protection against lightning strikes and power surges.

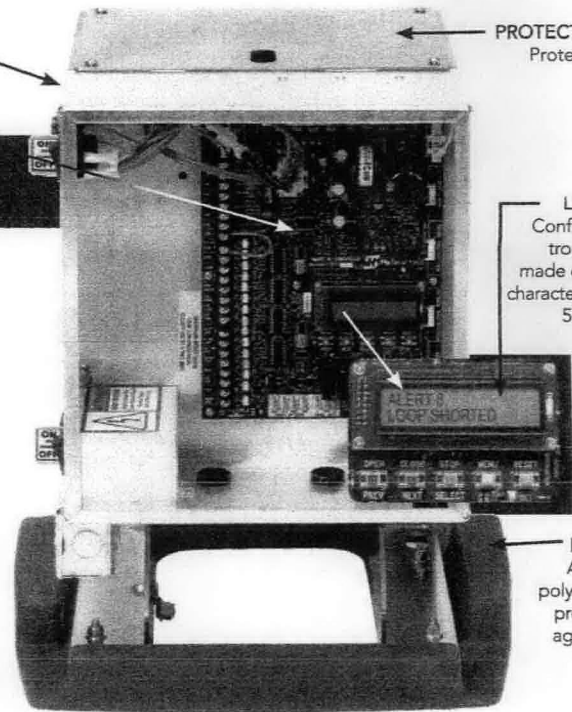
UPS BACKUP & SOLAR READY: Two 12V 8Ah batteries handle gate operation when AC power is unavailable.*

Four user-selectable UPS configurations available. Optional 50 Ah batteries quadruple DC cycles after power failure.

PROTECTION PLATE: Protects user from drive train.

LCD SCREEN: Configuration and troubleshooting made easy using 32 character display and 5 tact buttons.

BASE PLATE: Anti-corrosion polyethylene pad protects chassis against rust and corrosion.



Smart DC Benefits

Adaptive IES provides optimum sensitivity and eliminates false trips

Ice breaker mode powers through morning ice/snow buildup

Heater? Not unless temperatures plunge below -13°F (-25°C)

Configure gate to exact user needs with 70+ field configurable settings

Intelligent HY-5A vehicle detectors monitor and report loop conditions and more

Graceful, smooth open and close acceleration causes less gate component wear



SlideSmart DC 15
SlideSmart DCS 15F (solar)
 1,500 lb (680 kg) gates
 0.75 to 1.25 ft/s (23 to 38 cm/s)



SlideSmart DC 10F
SlideSmart DCS 10F (solar)
 1,000 lb (453 kg) gates
 1.75 to 2.25 ft/s (53 to 69 cm/s)

Visit www.hysecurity.com

For specifications, tech support, pictures and email subscriptions

HySecurity
 Simple • Reliable • Secure

1-800-321-9947 • www.hysecurity.com

COMMERCE

Highest Customer Satisfaction
Elegant & Reliable

Distributed by:



See the latest from HySecurity at www.hysecurity.com

HySecurity operators secure the world's critical infrastructure and key assets where ultimate reliability is vital. **SlideSmart** delivers that same uncompromising quality to commercial customers, where ease of use, consistent operation, low maintenance, long life and high reliability is expected.

SIMPLE. HySecurity strives for simplicity. Easy to install. Easy to configure. Easy to maintain. Easy to troubleshoot and repair.

RELIABLE. HySecurity operators last decades under the harshest climates and user conditions.

SECURE. HySecurity is the most used operator on critical infrastructure sites such as nuclear power plants, high security government agencies, embassies, ports, airports, and much more.

PROGRAM AND TROUBLESHOOT USING SMART DC CONTROLLER AND S.T.A.R.T. (Smart Touch Analyze & Retrieve Tool)

- Simplifies installation
- Configures gate operation to exact user needs quickly and easily
- Communicates in real time and stores faults in a date and time stamped log
- Simple, quick and inexpensive troubleshooting



Easily configure the operator with 5 tact buttons and a 32 character display. Faults flash on the display accompanied by an audio sequence which alerts owner. Faults can also be communicated in real time to the command and control network system for the ultimate in security. The 300 event fault log can be downloaded to a laptop computer to easily troubleshoot random events that appeared days in the past.

SlideSmart DC™ Models

	FAST Operators	
Standard	SlideSmart DC 15	SlideSmart DC 10F
Solar ☀	SlideSmart DCS 15	SlideSmart DC5 10F
Gate Weight Max.	1,500 lb (680 kg)	1,000 lb (453 kg)
Gate Length Max.	40 ft (12 m)	
Rate of Travel	0.75 to 1.25 ft/s (23 to 38 cm/s)** Open/Close speed set independently	1.75 to 2.25 ft/s (53 to 69 cm/s) Open/Close speed set independently
Duty Cycle	Continuous	
Horsepower	1/2 hp	
Drive	Electromechanical	
Uninterruptible Power Supply†	Standard battery backup gate travel: Two 8Ah batteries. Up to 4,000 ft (1,219 m) after AC power loss. Field configurable to fail open or secure when batteries deplete. Extended battery backup gate travel: Two 50Ah batteries. Up to 25,000 ft (7,620 m) after AC power loss. Field configurable to fail open or secure when batteries deplete.	
Temperature Rating	-13°F to 158°F (-25°C to 70°C) No heater necessary.	
Voltage Input	115V or 230V, 50/60 Hz, Call for 208V 50/60 Hz Solar: 24VDC solar panels	
Accessory Power	24VAC, 12VDC and 24VDC 1A each Solar: 12VDC and 24VDC, 1A each	
Communication	USB, RS-232, RS-485	
User Controls	Smart DC Controller with 70+ configurable settings. 32 character LCD display and 5 tact buttons or a PC using S.T.A.R.T. software.	
Relays	Two configurable user relays: 30VDC, 3A solid state and 250VAC, 10A electromechanical	
ETL Listed (UL 325)	Usage Class I, II, III, IV**	Usage Class III, IV***
Cycle Tested	250,000 cycles	
Warranty	5 year (7 year single-family residential)	5 year

†SlideSmart DC is exceptionally energy efficient, however actual battery backed up gate travel will depend on gate resistance to travel, cycle length, battery health, ambient temperature, accessories drawing battery power and frequency of gate cycles during power outage.

**Speed setting cannot be configured to exceed 1 ft/s for Class I and II usage.

***Not for residential use or applications intended to serve the general public.



OPTIONAL ACCESSORIES:

- HY-5A intelligent vehicle detectors
- Photo eye
- Extended backup batteries
- Base extension, 12.5" (32 cm), for extended batteries or more conduit space
- Bolt-on gate brackets
- Stainless steel chain

Compatible with most access control, safety, vehicle detection and other accessories.

SYSTEM DESIGN SUPPORT: Contact HySecurity for CAD drawings, installation information, technical manuals, help with custom site requirements or other support. Visit www.hysecurity.com or call to speak with a HySecurity representative today.



Contact HySecurity for an operator/parts distributor near you.
phone **800-321-9947** fax **888-321-9946**
www.hysecurity.com • info@hysecurity.com

